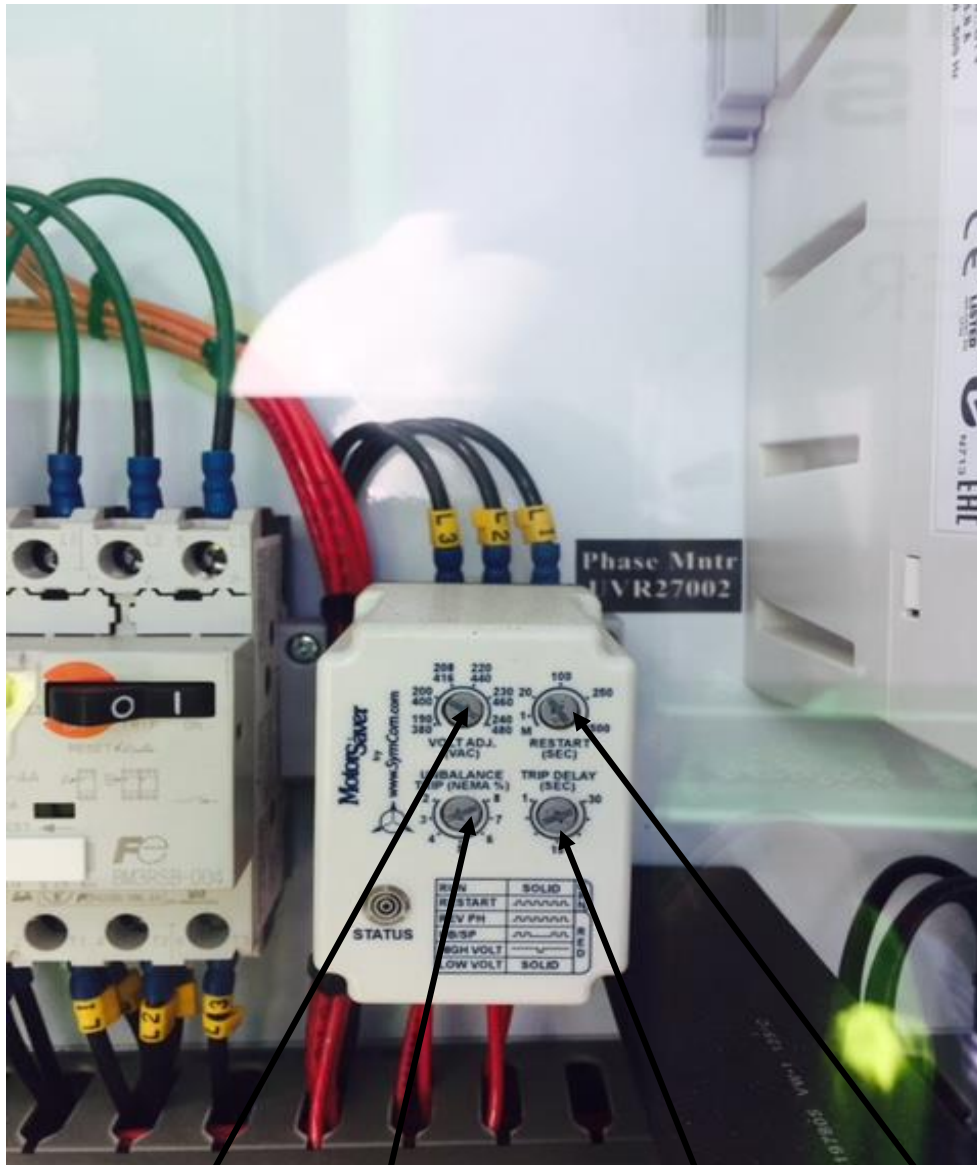


# SACP Start-up Help



Make sure it is set @  
Generator Voltage  
Factory set @ 460  
Normal Sunbelt Setting @ 480

Check to make sure it is  
set @ +/- 3%

Note Delay- Must Wait 30  
Sec in this case to Restart  
Factory Setting is 90 Sec

Trip Delay – Set at 30 Sec



Compressor Motor Circuit Breaker Must be in the ON Position

#1- Condenser Fan Motor Circuit Breaker

#2- Blower Circuit

Check-Control Circuit Breaker



SA = Supply Air – This is the air going into the space

RA = Return Air - This is the air coming into the unit (either from outside or Returned from the building)

In most all cases we should have this set on SUPPLY AIR – SA – When operating in the hand (manual mode) the sensors become read only.

When operating in local (on board PLC Control) mode this switch determines if the unit will control via SA or RA



Compressor Control Switch. (Cooling Stage Control Switch)

Local - In this position the PLC setting are running the Compressor – This is where we should be most of the time

Hand - This setting bypasses the PLC

Remote – Running off an external thermostat (running space temp control air)

Hand label hidden by switch

## VFD Key Pad

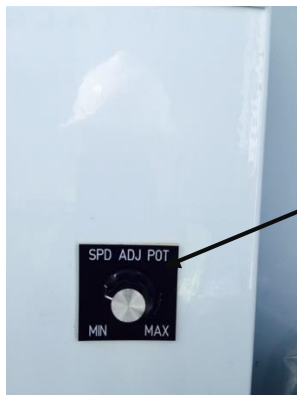


Receiving information from the Speed adjustment dial (below). This will set the blower to run at the desired Speed.

NOTE: Remember that at all times the blower will be running. Meaning- when using 100% makeup air the outside air will be pumped into the building at all times. The air will not always be conditioned.

Example – SA set at 55 degrees, outside air is 52 degrees the blower will provide 52 degree air to the space. If there is a cold night this could cause an issue.

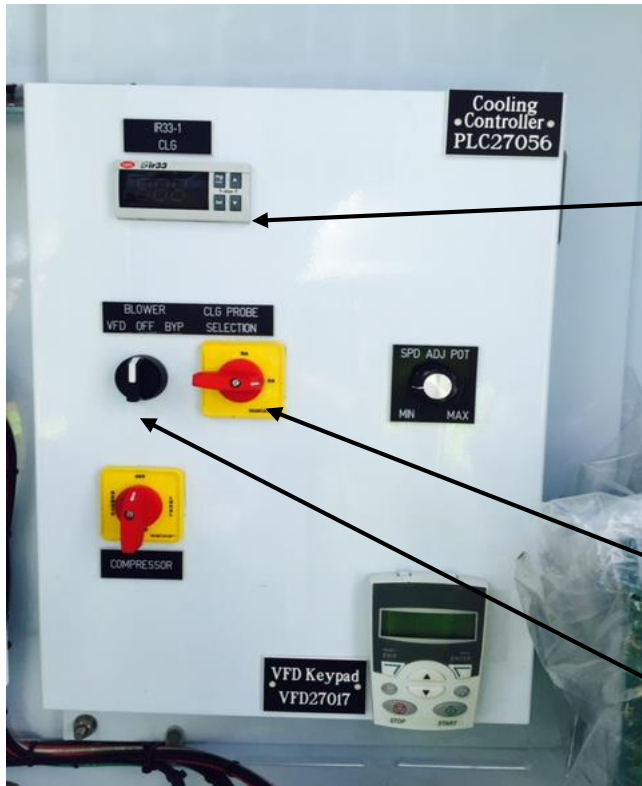
## Speed Adjustment Potentiometer



Used to adjust the speed of the fan – VFD. This will determine the CFM of the blower.

Always start up the unit with this in the min setting, then ramp up from there.

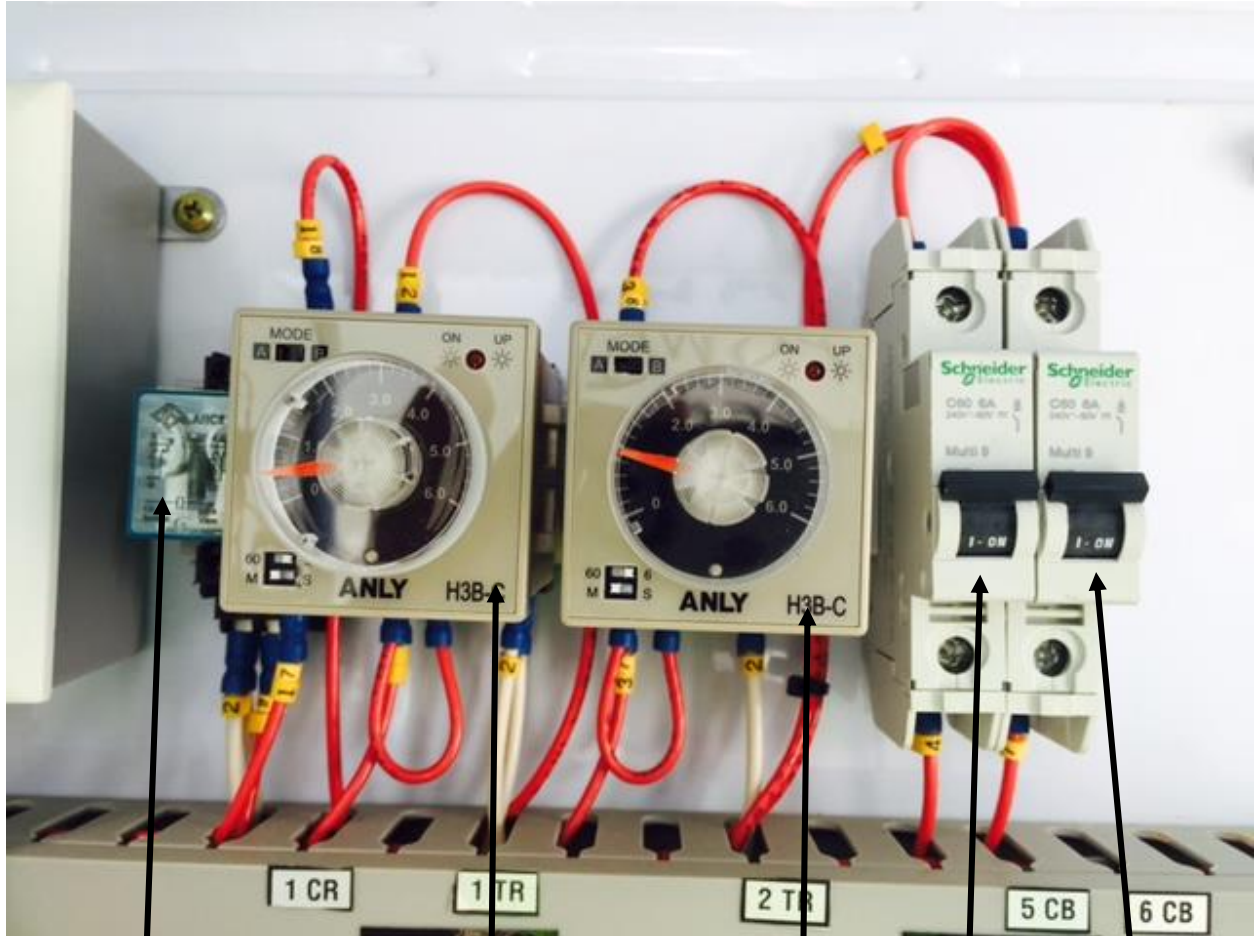
**Remember, static pressure and airflow are linear, the more airflow = more static pressure for this series**



System Control –IR33  
This sets both the SA and RA values. Each unit has been preset by the factory  
Set-1 is the RA setting @ 70 degrees  
Set-2 is the SA setting @ 55 degrees

In most all cases we will use the SA setting. Refer to the Operations manual to change settings.

Blower Selection Switch  
VFD = Uses variable speed setting  
Bypass = Bypasses the VFD and runs @ 60Hz  
Off = Off



VFD Trip Relay

Control Circuit Breaker  
in the Panel Both Must  
be ON

Conv. Outlet Circuit  
Breaker

TR- Timer Relay – Set here at 30  
Sec-Blower will detect any  
restrictions in the air flow. Bad  
Power / Intermittent

**TR- Delay on Compressor  
Factory recommended setting is  
2- min  
Sunbelt Standard setting is 1-min**